

SML MK II


Torque Arm

Printed Matter No. 9836 6460 01
Publication Date 2019-09-06

Valid from Serial No. B0690001
Valid to Serial No. B1699999

Product Instructions

SML-10-MKII	8202900320
SML-40-MKII	8202900321
SML-80-MKII	8202900322
SML-150-MKII	8202900323
SML-300-MKII	8202900324
SML-500-MKII	8202900325
SML-1000-MKII	8202900326

	⚠ WARNING
	Read all safety warnings and instructions
	Failure to follow the safety warnings and instructions may result in electric shock, fire and/or serious injury. Save all warnings and instructions for future reference

Atlas Copco

Table of Contents

Product information	3
General information	3
Safety signal words	3
Warranty	3
Website.....	3
ServAid	4
Safety Data Sheets MSDS/SDS.....	4
Country of origin	4
Dimensional drawings	4
Overview.....	4
Applications	4
Product data	5
Installation	7
Installation instructions	7
Installing the torque arm	7
Installing the balancer.....	7
Service	10
Maintenance instructions	10
Daily maintenace	10
Lubrication instructions	10
Lubrication	10

Product information

General information

WARNING Risk of Property Damage or Severe Injury

Ensure that you read, understand and follow all instructions before operating the tool. Failure to follow all the instructions may result in electric shock, fire, property damage and/or severe bodily injury.

- ▶ Read all Safety Information delivered together with the different parts of the system.
- ▶ Read all Product Instructions for installation, operation and maintenance of the different parts of the system.
- ▶ Read all locally legislated safety regulations regarding the system and parts thereof.
- ▶ Save all Safety Information and instructions for future reference.

Safety signal words

The safety signal words Danger, Warning, Caution, and Notice have the following meanings:

DANGER	DANGER indicates a hazardous situation which, if not avoided, will result in death or serious injury.
WARNING	WARNING indicates a hazardous situation which, if not avoided, could result in death or serious injury.
CAUTION	CAUTION, used with the safety alert symbol, indicates a hazardous situation which, if not avoided, could result in minor or moderate injury.
NOTICE	NOTICE is used to address practices not related to personal injury.

Warranty

- Product warranty will expire 12 months after the product is first taken into use, but will in any case expire at the latest 13 months after delivery.
- Normal wear and tear on parts is not included within the warranty.
 - Normal wear and tear is that which requires a part change or other adjustment/overhaul during standard tools maintenance typical for that period (expressed in time, operation hours or otherwise).
- The product warranty relies on the correct use, maintenance, and repair of the tool and its component parts.
- Damage to parts that occurs as a result of inadequate maintenance or performed by parties other than Atlas Copco or their Certified Service Partners during the warranty period is not covered by the warranty.
- To avoid damage or destruction of tool parts, service the tool according to the recommended maintenance schedules and follow the correct instructions.
- Warranty repairs are only performed in Atlas Copco workshops or by Certified Service Partners.

Atlas Copco offers extended warranty and state of the art preventive maintenance through its ToolCover contracts. For further information contact your local Service representative.

For electrical motors:

- Warranty will only apply when the electric motor has not been opened.

Website

Log in to Atlas Copco: www.atlascopco.com.

You can find information concerning our products, accessories, spare parts and published matters on our website.

ServAid

ServAid is a portal that contains technical information for all hardware and software products, such as:

- Regulatory and Safety information
- Technical data
- Installation, Operation and Service instructions
- Spare parts lists
- Accessories

ServAid is continuously updated and is available at: <https://servaid.atlascopco.com>

For further information contact your local Atlas Copco representative.

Safety Data Sheets MSDS/SDS

The safety data sheets describes chemical products sold by Atlas Copco.

For more information, consult the website:

www.atlascopco.com/sds

Country of origin

Please refer to the information on the product label.

Dimensional drawings

For information about the dimensions of a product, see the Dimensional drawings archive:

<http://webbox.atlascopco.com/webbox/dimdrw>

Overview

Applications

Atlas Copco torque arms are an excellent means of assistance when using electric or pneumatic screwdrivers and nutrunners. They stress relieve the operators arm, wrist and shoulder from vibration, torque and weight during repeated actions.

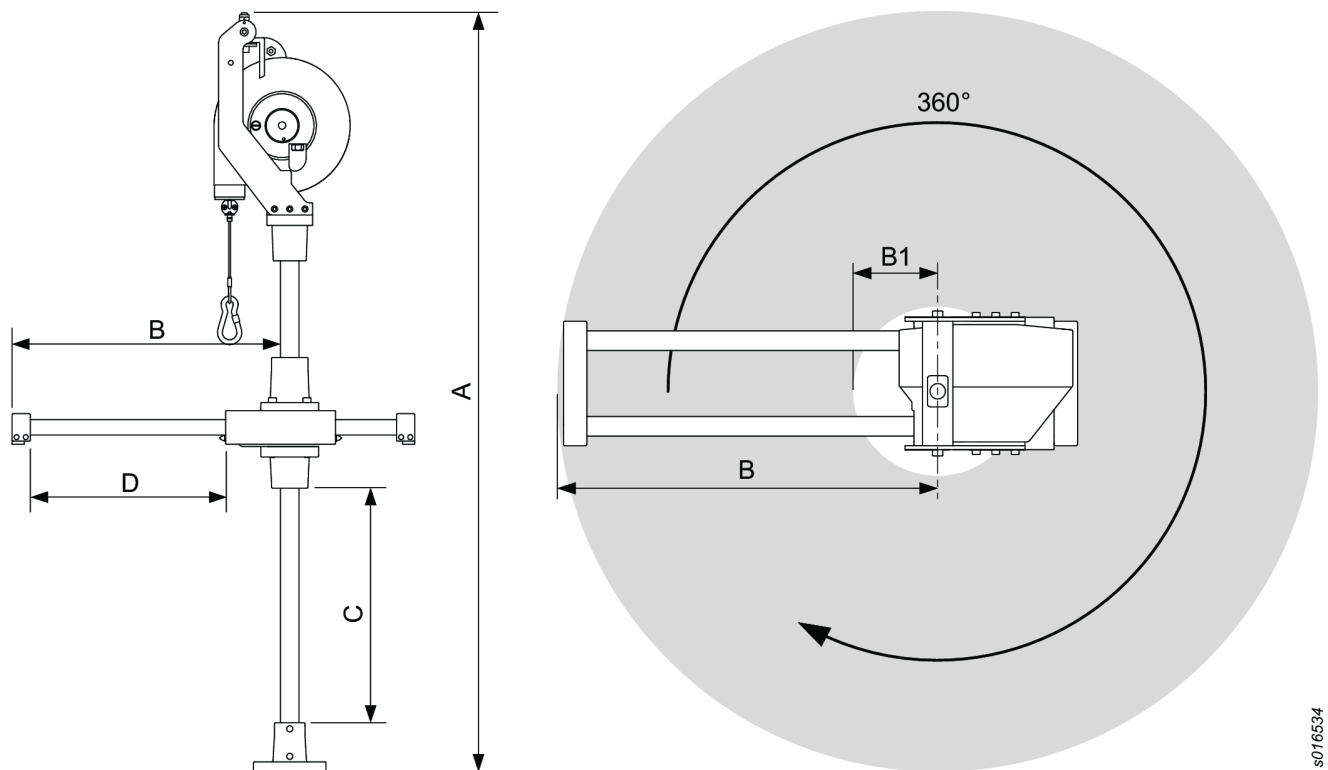
Even at a modest level of exertion repeated actions can lead to severe disorders.

As an additional advantage the Atlas Copco torque arms also make savings on the tool accessories e.g.bits, taps etc. due to entering the screw or the hole more in right angle.

Torque arms in the SML series have a large working range and are exceptionally easy to position and handle. The design is intended for heavy duty operations over a long period of time.

Tool torque should not exceed the specified torque range of each specific arm.

Product data



s016534

A	Height
B	Max reach without tool holder
B1	Min reach without tool holder
C	Vertical stroke
D	Horizontal stroke

Model	Art number	Torque Max		A mm	B mm
		Nm	ft.lb		
SML 10 MK II	8202 9003 20	10	7.4	603	325
SML 40 MK II	8202 9003 21	40	29.5	849	370
SML 80 MK II	8202 9003 22	80	59	979	440
SML 150 MK II	8202 9003 23	150	110.7	1049	482
SML 300 MK II	8202 9003 24	300	221.4	1236	524
SML 500 MK II	8202 9003 25	500	369	1362	578
SML 1000 MK II	8202 9003 26	1000	738	1501	628

Model	Art number	B1 mm	C mm	D mm	Fastening screws for the footpart	Weight	
						kg	lb
SML 10 MK II	8202 9003 20	85	220	240	4xM6	43643213	
SML 40 MK II	8202 9003 21	95	340	275	4xM6	43643213	
SML 80 MK II	8202 9003 22	120	442	320	4xM8	43643213	

Model	Art number	B1 mm	C mm	D mm	Fastening screws for the footpart	Weight kg	Weight lb
SML 150 MK II	8202 9003 23	122	500	360	4xM8	43643213	
SML 300 MK II	8202 9003 24	124	500	400	4xM10	43643213	
SML 500 MK II	8202 9003 25	138	570	440	4xM10	43643213	
SML 1000 MK II	8202 9003 26	148	640	480	4xM12	43643213	

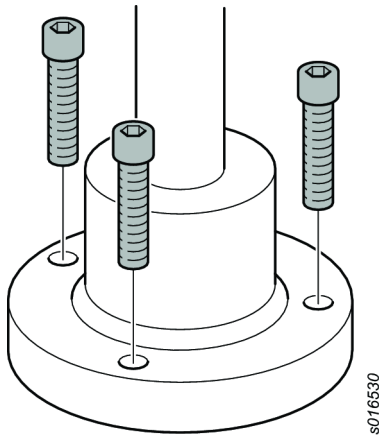
Installation

Installation instructions

Installing the torque arm

Before you start the installation, measure the applicable position of the torque arm for your working area.

Fasten the torque arm base with 4 screws (not supplied) on a perfectly horizontal bench. Tighten the screws until the torque arm is properly seated.



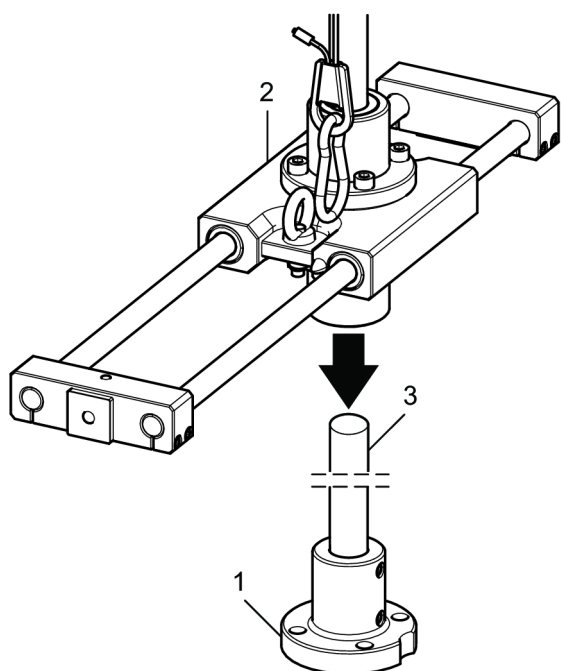
Installing the balancer

Before you start the installation, measure the applicable position of the torque arm for your working area.



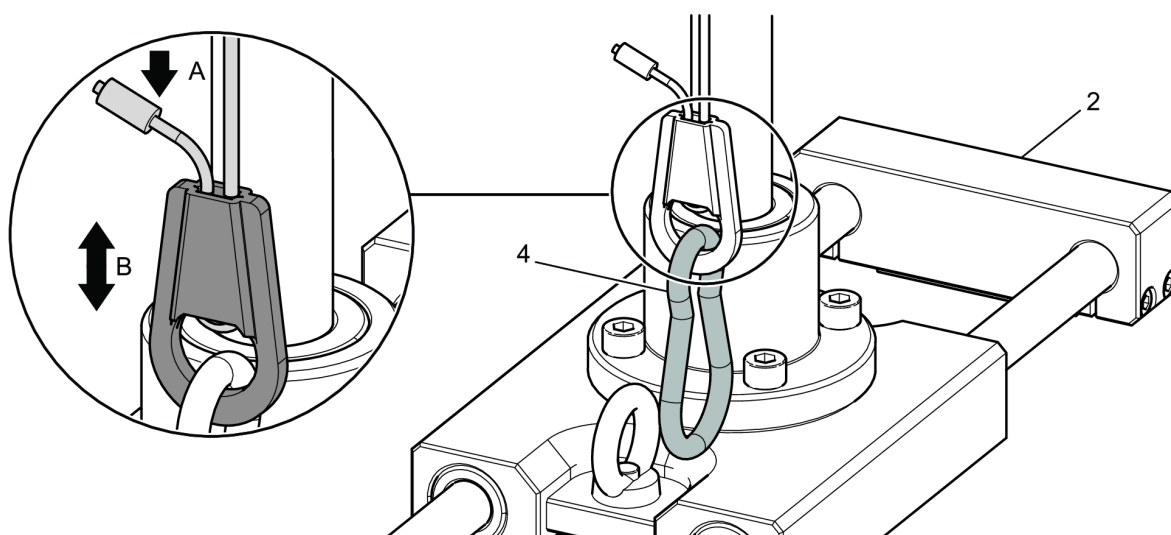
CAUTION: Depending on the size and weight of the parts to be installed, a second person will be required to help to carry out installation step No. 3.

1. After the footpart (1) has been fastened, the horizontal unit (2) is pushed onto the upright shaft (3).



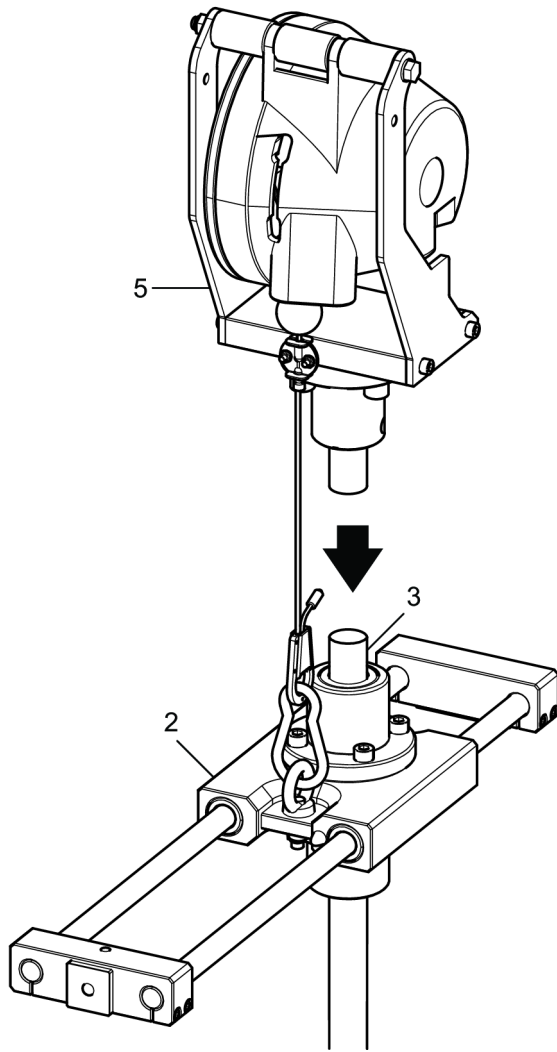
S016531

2. Now install the balancer (5). To do this, the spring hook (4) is hooked into the link of the horizontal unit (2).



S016532

3. Lift the horizontal unit (2) until the balancer (5) can be inserted into the upright shaft (3).




S016533

Service

Maintenance instructions

Daily maintenance

-  Do not operate the torque arm if it is damaged or malfunctioning.
- Examine the torque arm attachment and all structural parts for wear and cracks.
- Examine the torque arm for loose screws and nuts.
- Do a complete functional test including a full extension and retraction of the torque arm in its complete range of movements.
- Examine sliding bearings and axles when there is high friction.
- Replace the entire arm if extensive wear, cracks and/or damage are detected.
- Replace worn nuts or washers.

Lubrication instructions

Lubrication

- We recommend that the bench stand pole is lubricated with a couple of drops of oil twice a year.
- The bushings on the arms does not need to be lubricated.

Original instructions



**Atlas Copco Industrial
Technique AB**
SE-10523 STOCKHOLM
Sweden
Telephone: +46 8 743 95 00
Telefax: +46 8 644 90 45
www.atlascopco.com

© Copyright 2019, Atlas Copco Industrial Technique AB. All rights reserved. Any unauthorized use or copying of the contents or part thereof is prohibited. This applies in particular to trademarks, model denominations, part numbers and drawings. Use only authorized parts. Any damage or malfunction caused by the use of unauthorized parts is not covered by Warranty or Product Liability.

Out of respect to wildlife and nature, our technical literature is printed on environmentally friendly paper.